

Time Study of the Battery Operated Pruning Tools – milestone 3.3.2

Presenter: **Tim Petro**

Meeting Date: 7/10/2022



1

BACKGROUND

■ What is the problem to solve?

□ Tree Pruning

- Lack of mechanisation
- Labour supply
- Safety
- Productivity



2

Approach

■ Power assisted manual pruning

- Literature review identified battery tools used in other industries as an option for forestry tree pruning
- Base testing of the tools completed in Gisborne private forests
- Presentations given to Gisborne forest owner / managers
- Workplan completed to test equipment formally



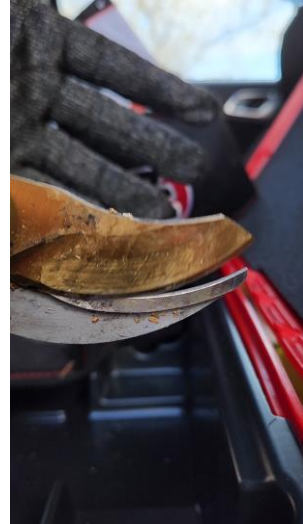
3

PROJECT HIGHLIGHTS

- Work plan developed to evaluate selected pruning tools (Pellenc & Infaco)
- Identification of project collaborators: Tim Petro, FGR, Thomas Crosse (NZFM), Lake Taupo Forests, Hatten Contracting – now going to be Mahi Rakau
- Field testing and time study in production situation – Working on with FORME with use of production study software
- Demonstrated tools to local forest companies and their contractors – Logic Forest Solutions, Forest Enterprise, Ernslaw One, Pride Contracting, Mahi Rakau

4

Infaco trial



5

WHERE TO FROM HERE?

- Slightly behind schedule due to extended planting season, meaning contractors not yet ready to return to pruning operations
- Crew planned to start back pruning 17th October
- Desktop training with the equipment
- Field use for approximately 3 weeks
- Aim to conduct production study in mid late November

6

INVOLVEMENT FROM INDUSTRY PARTNERS

- Thank you to Thomas from NZFM, Mahi Rakau for coming on board, FORME Consulting and Hydralada NZ

7

Precision Silviculture Partnership

Your details here
Tim Petro
Fergus Rural Ltd
tim@fergusrural.co.nz

www.fgr.nz

Ministry for Primary Industries
Manatū Ahu Matua



supported by
forestgrowers
commodity levy


FOREST
GROWERS
RESEARCH

8