

Appendix 1. Maps showing the location of SGMC Trials.

Figure 1. Location of SGMC trials with respect to Level 1 Environments.

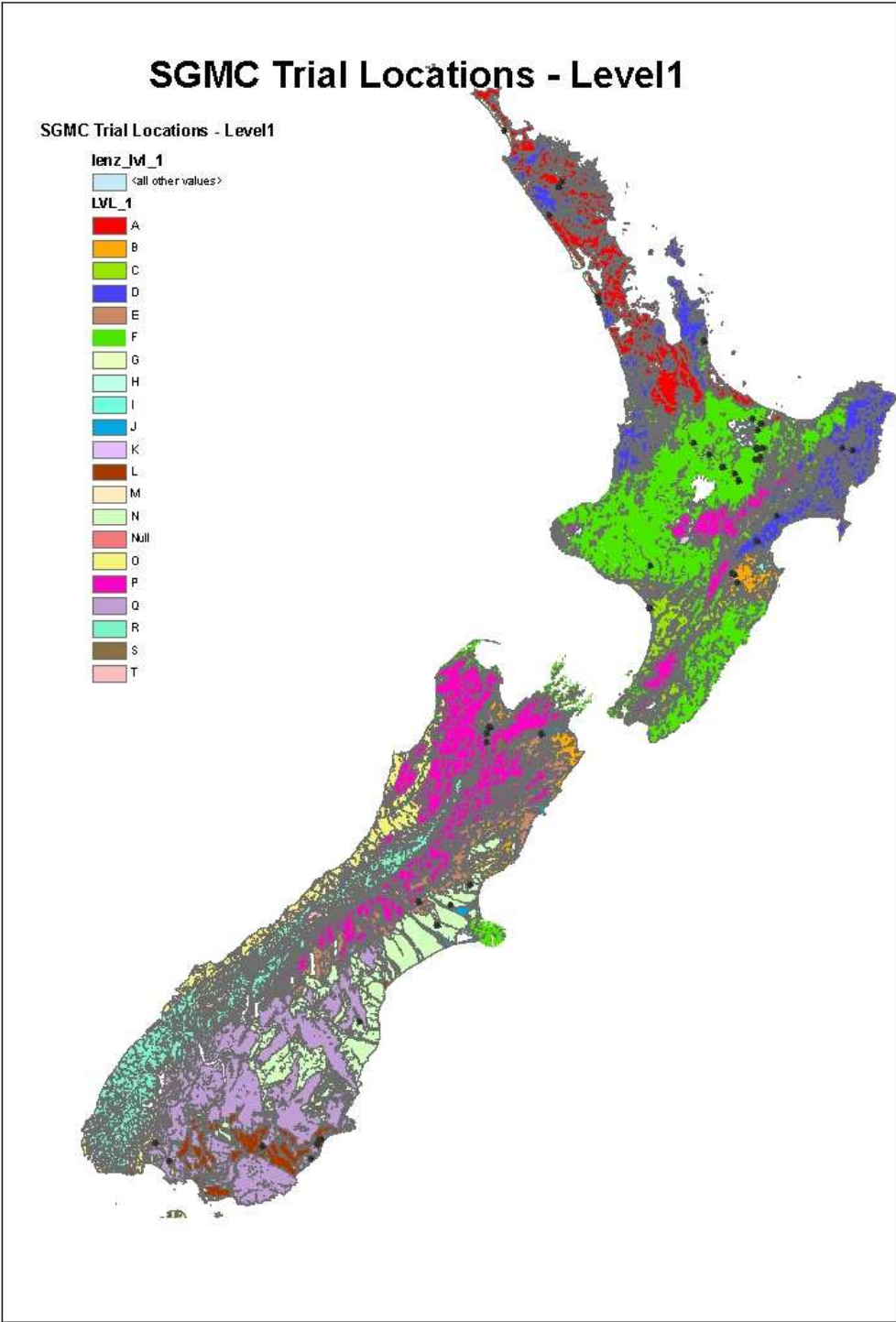


Figure 2. Location of SGMC trials in Northern Region with respect to Level 2 Environments.

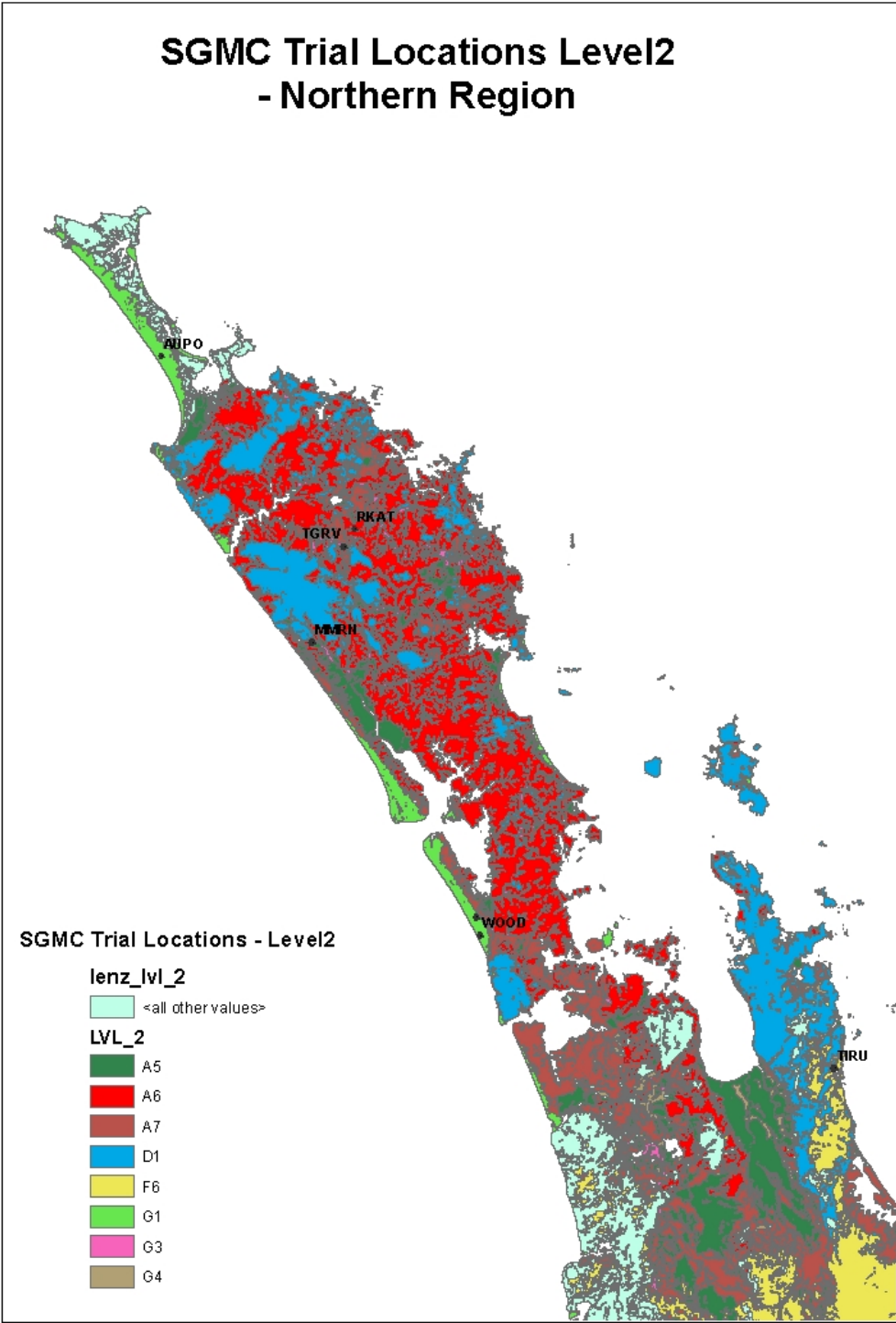


Figure 3. Location of SGMC trials in Central North Island and East Coast Regions with respect to Level 2 Environments.

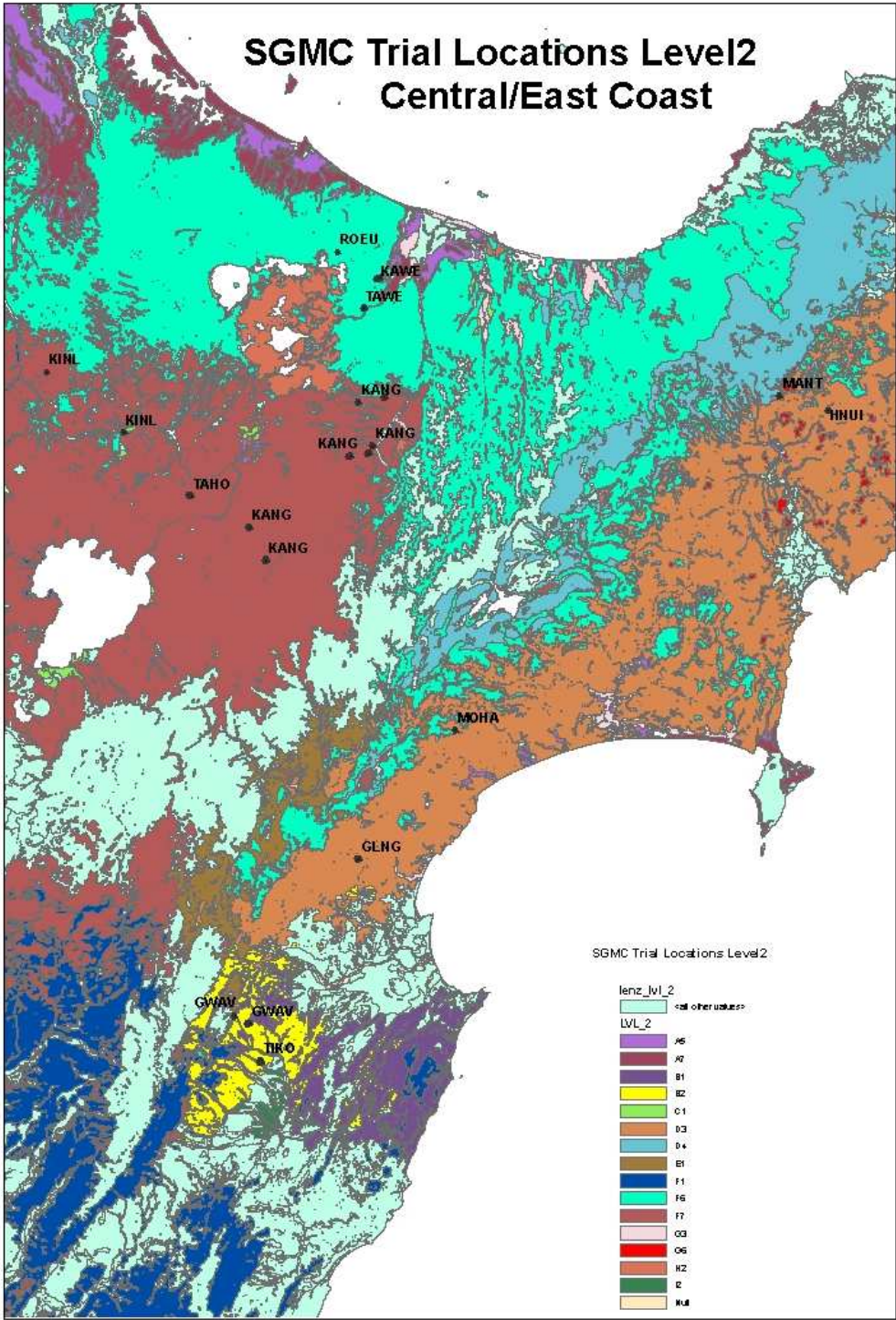


Figure 4. Location of SGMC trials in Southern North Island with respect to Level 2 Environments.

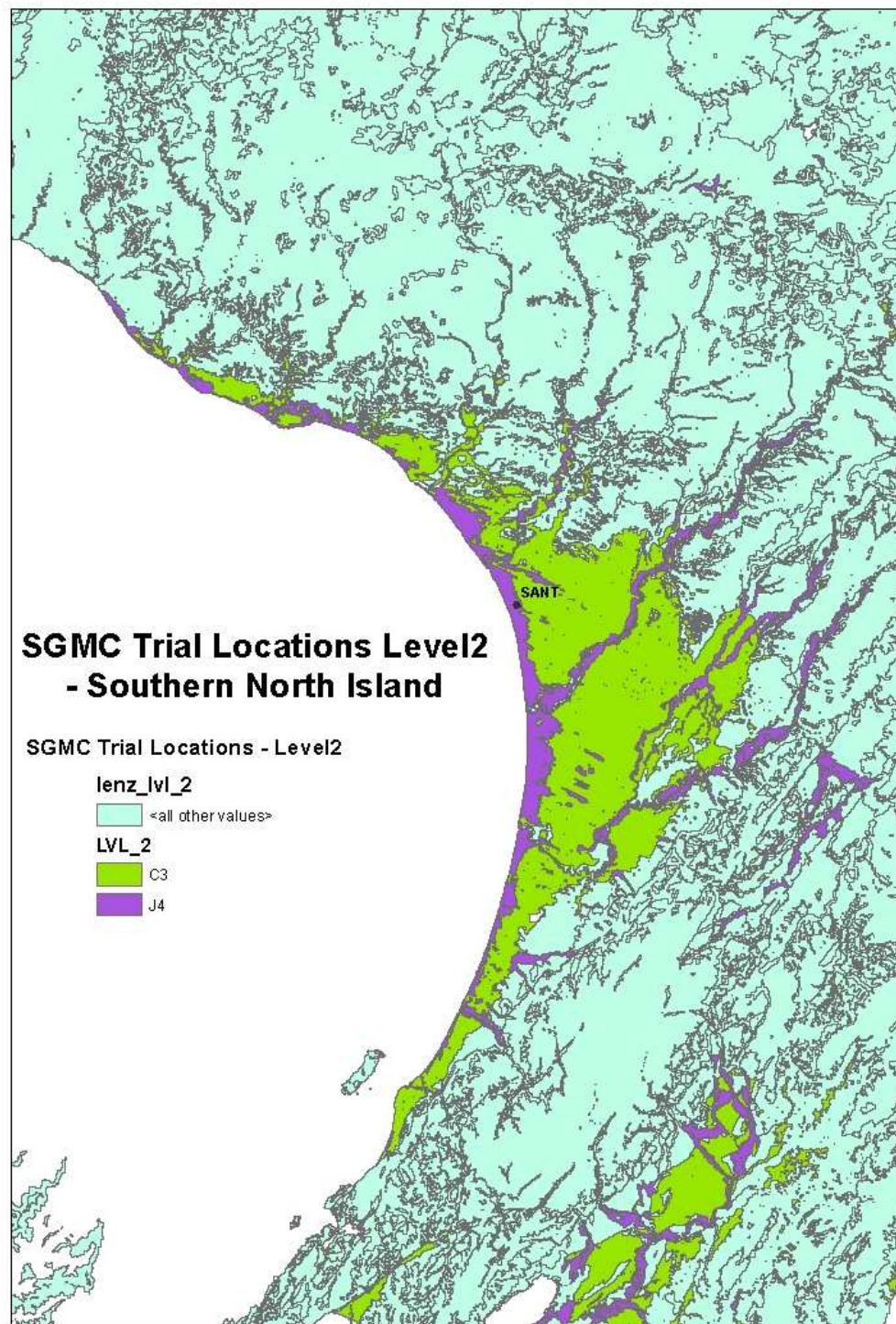


Figure 5. Location of SGMC Trials in Northern region of South Island with respect to Level 2 Environments.

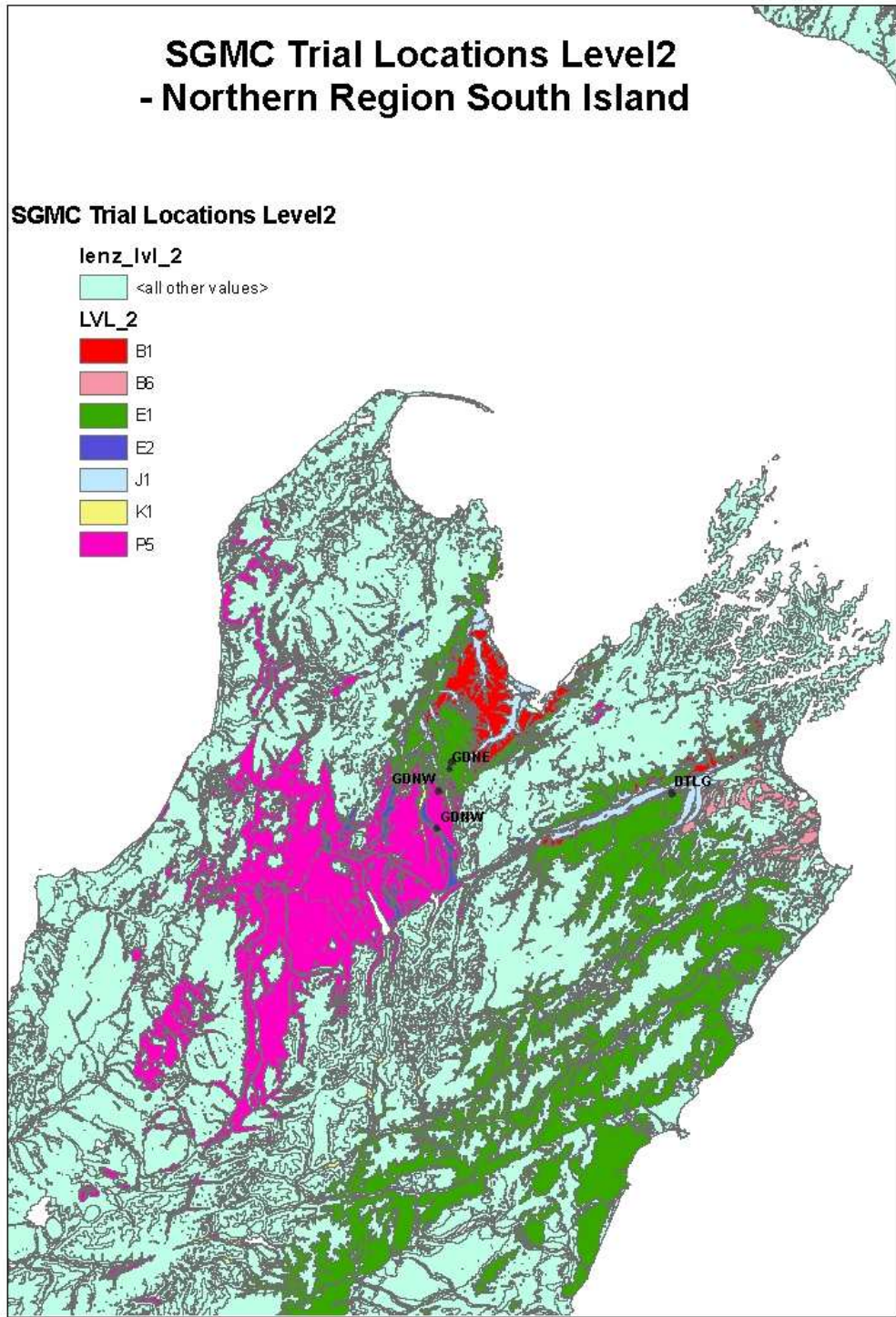


Figure 6. Location of SGMC Trials in Central South Island with respect to Level 2 Environments.

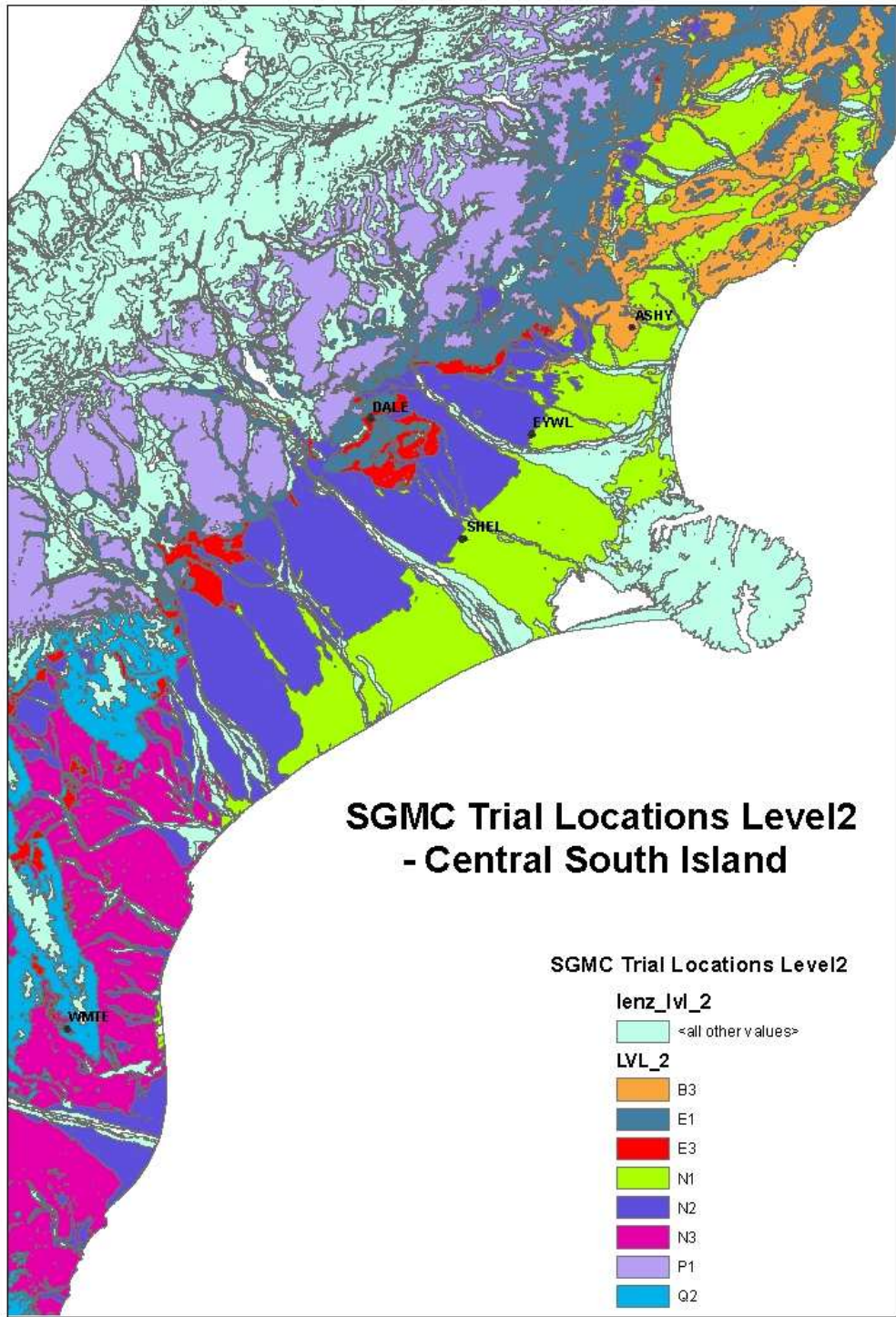
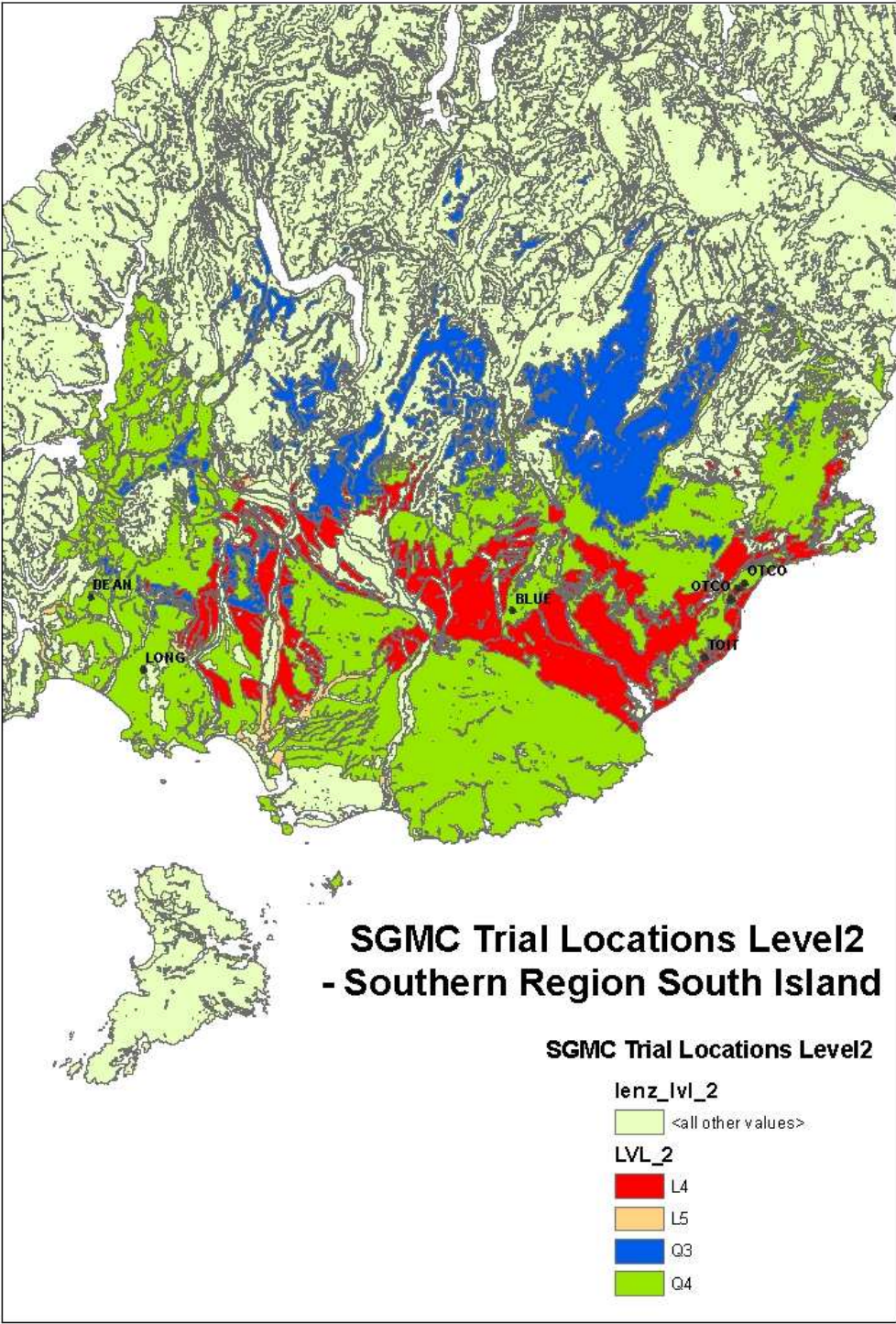


Figure 7. Location of SGM Trial Locations in Southern South Island with respect to Level 2 Environments.



Appendix 2. Maps showing location of sites where branches have been measured by destructive sampling.

Figure 8. Location of all “destructive sampling” sites, with respect to Level 1 Environments.

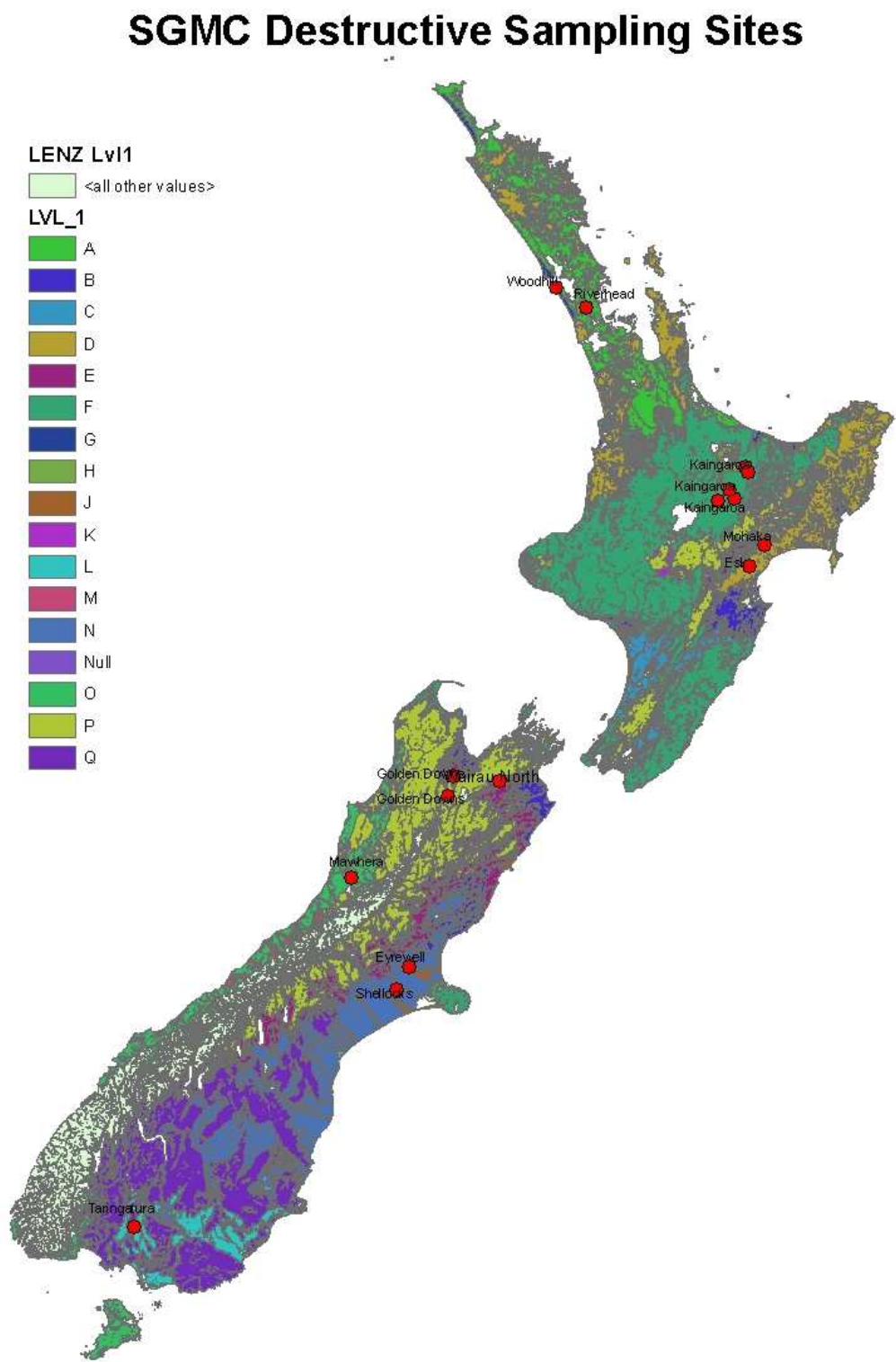


Figure 9. Location of “destructive sampling” sites in Northern North Island, with respect to Level 2 Environments.

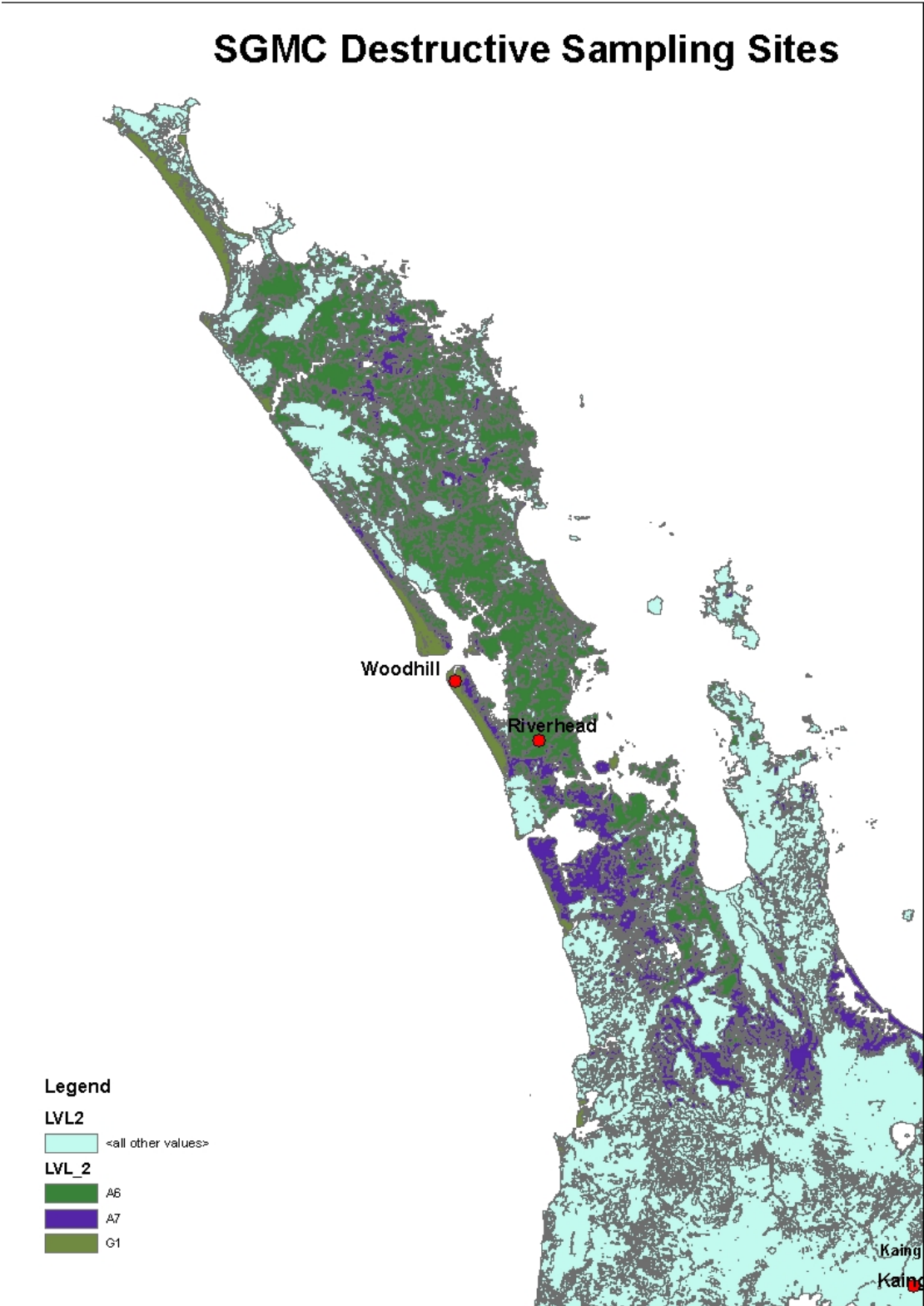


Figure 10. Location of “destructive sampling” sites in Central North Island with respect to Level 2 Environments.

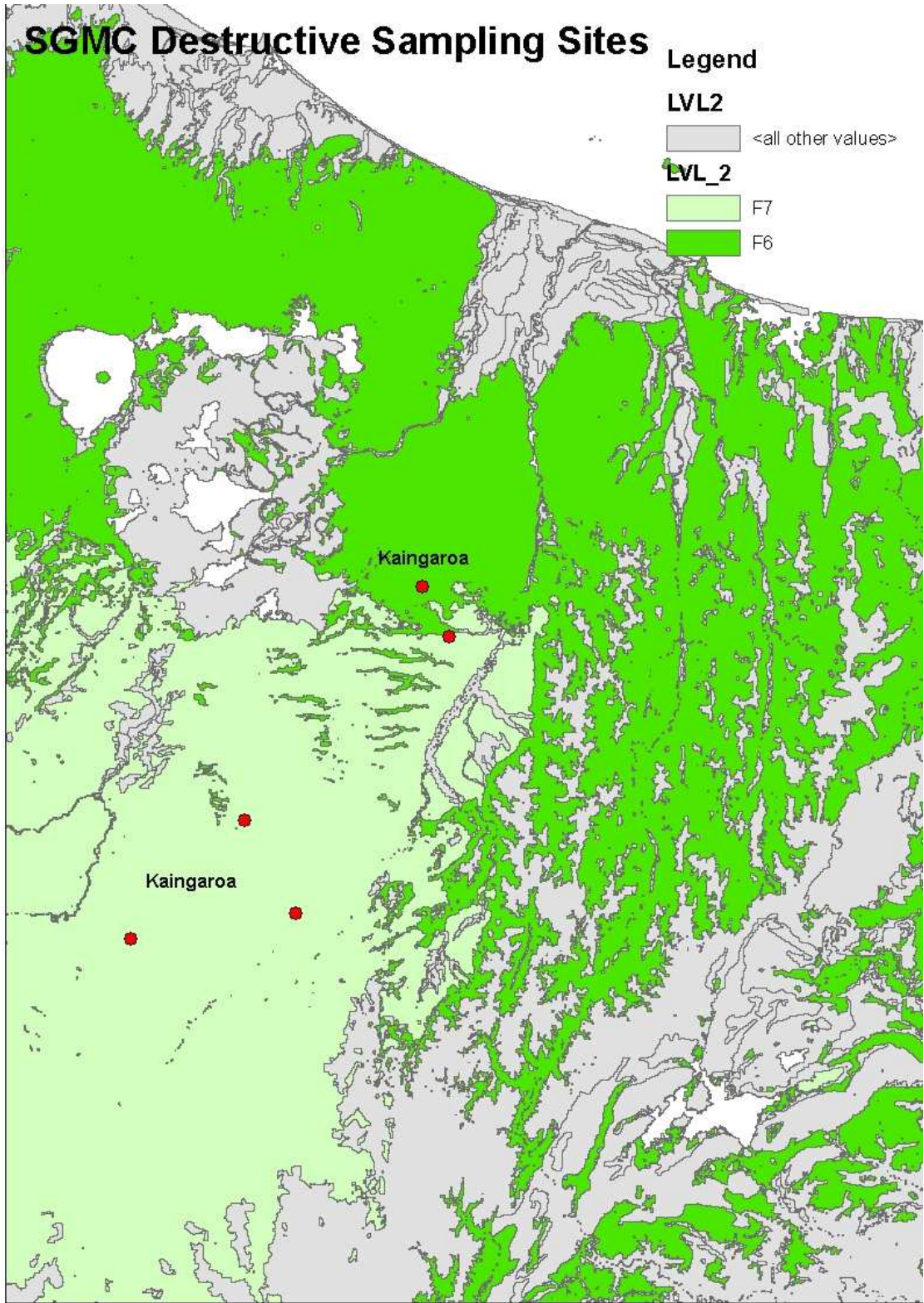


Figure 11. Location of sites in Hawkes Bay Region with respect to Level 2 Environments.

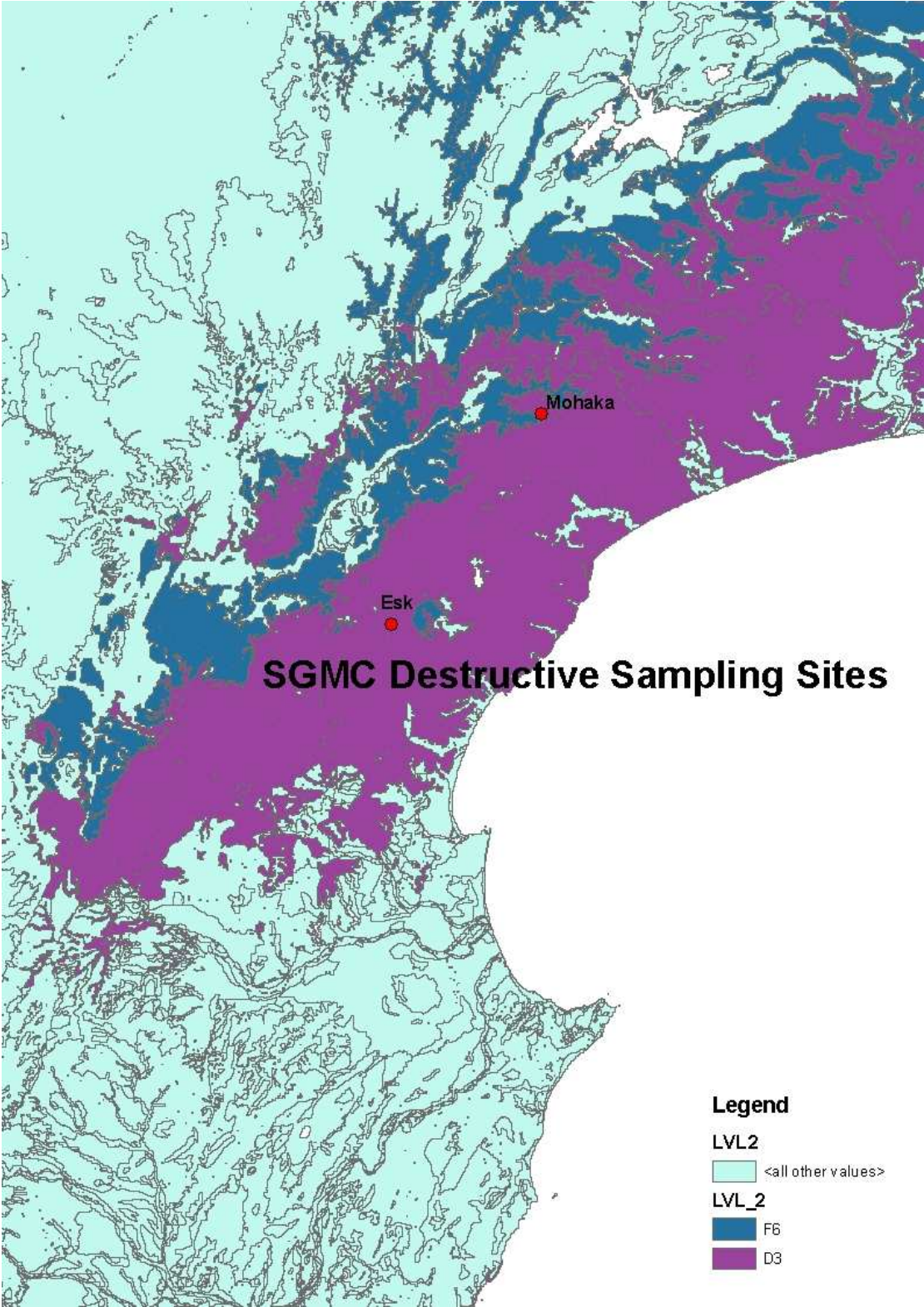


Figure 12. Location of “destructive sampling” sites in Nelson Region with respect to Level 2 Environments.

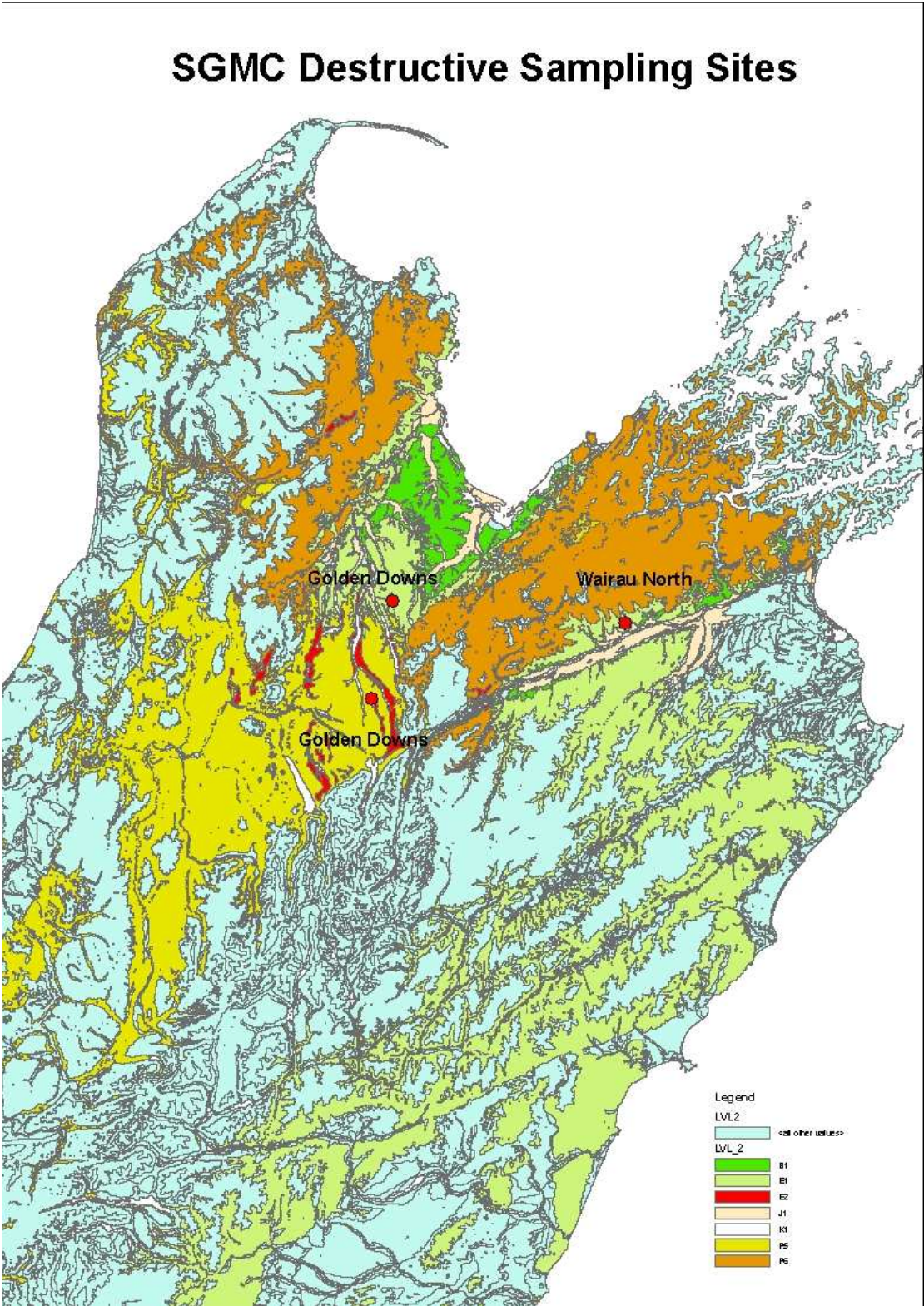


Figure 13. Location of “destructive sampling” sites in Canterbury with respect to Level 2 Environments

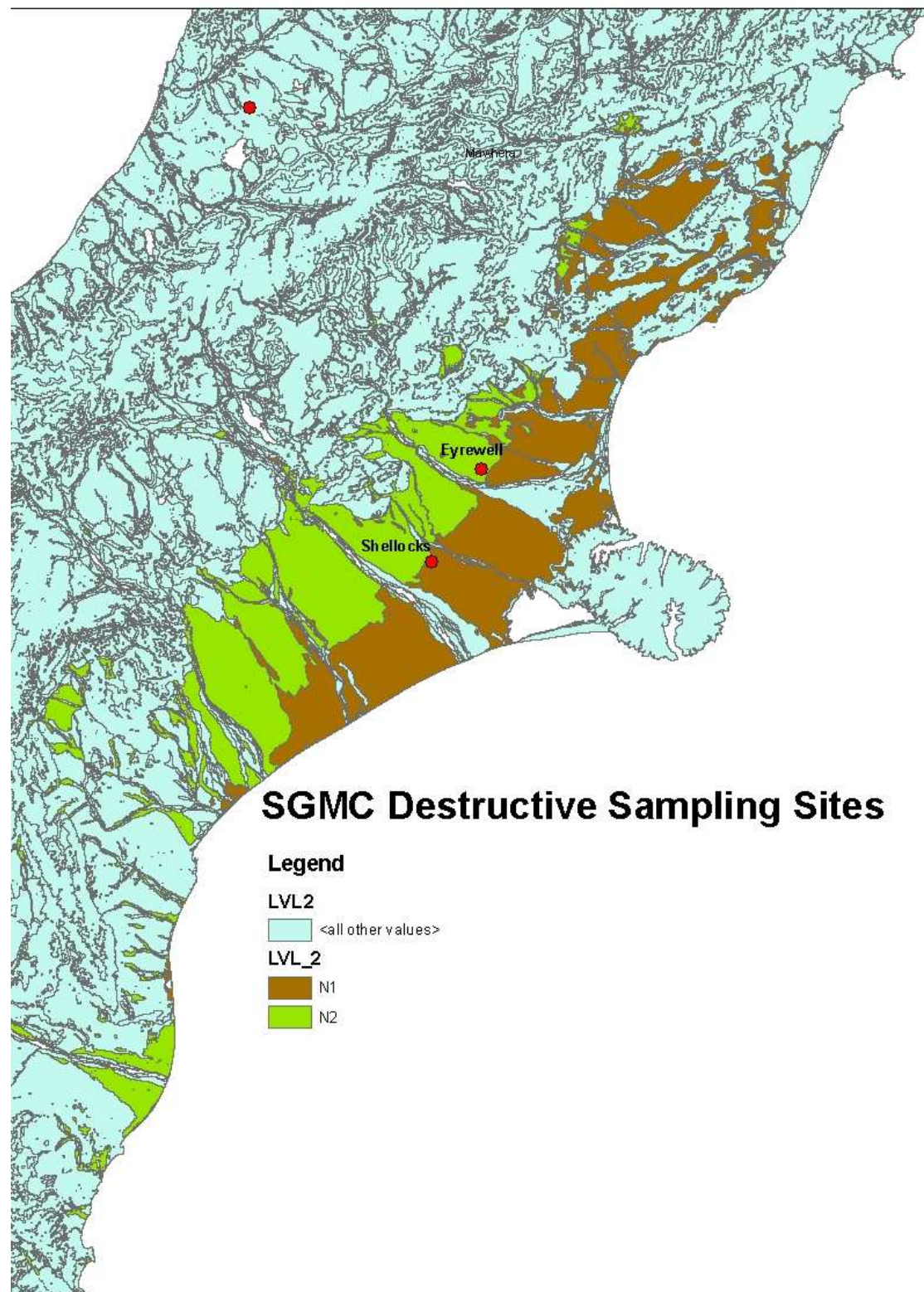


Figure 14. Location of “destructive sampling” sites in Westland with respect to Level 2 Environments.

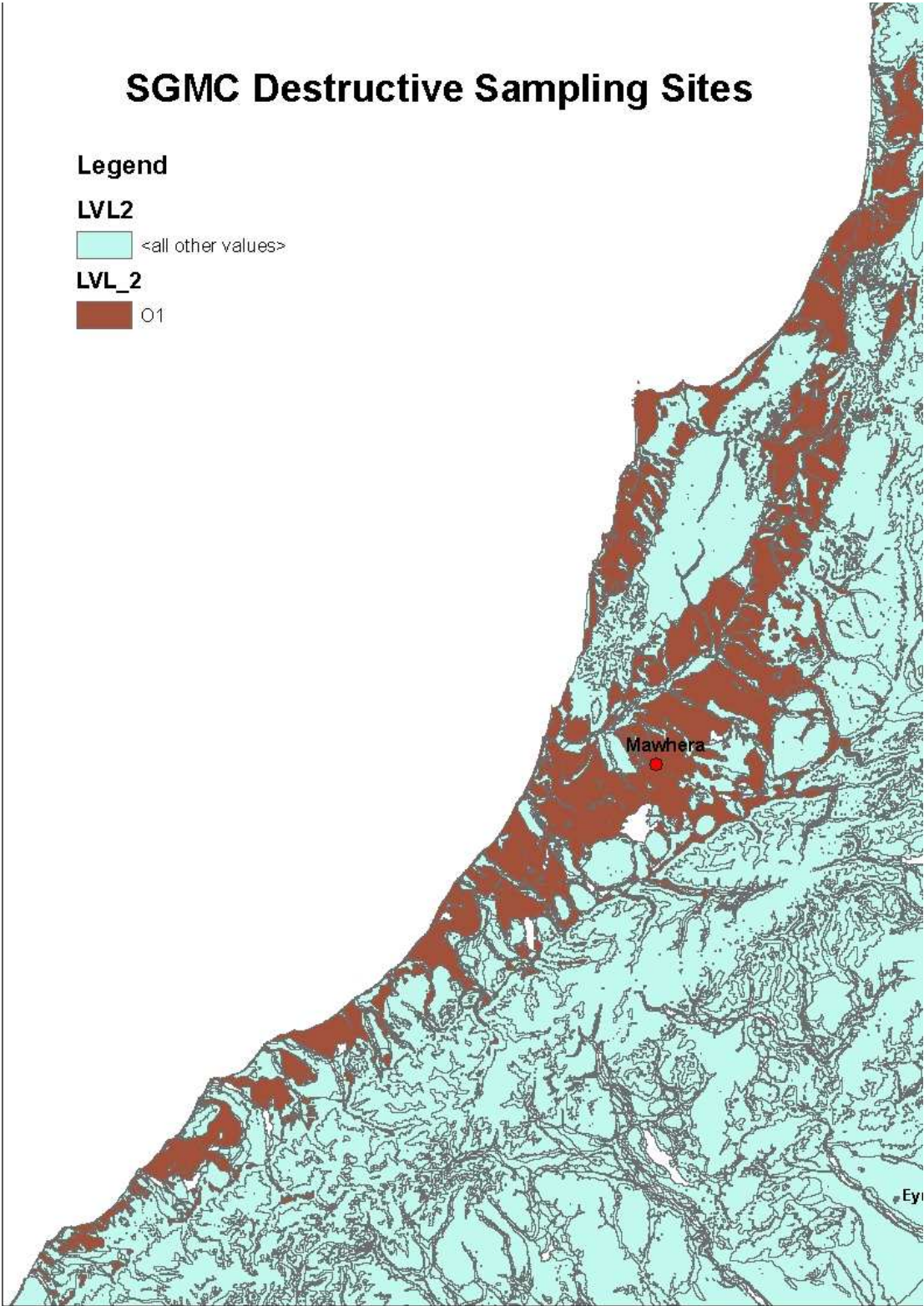
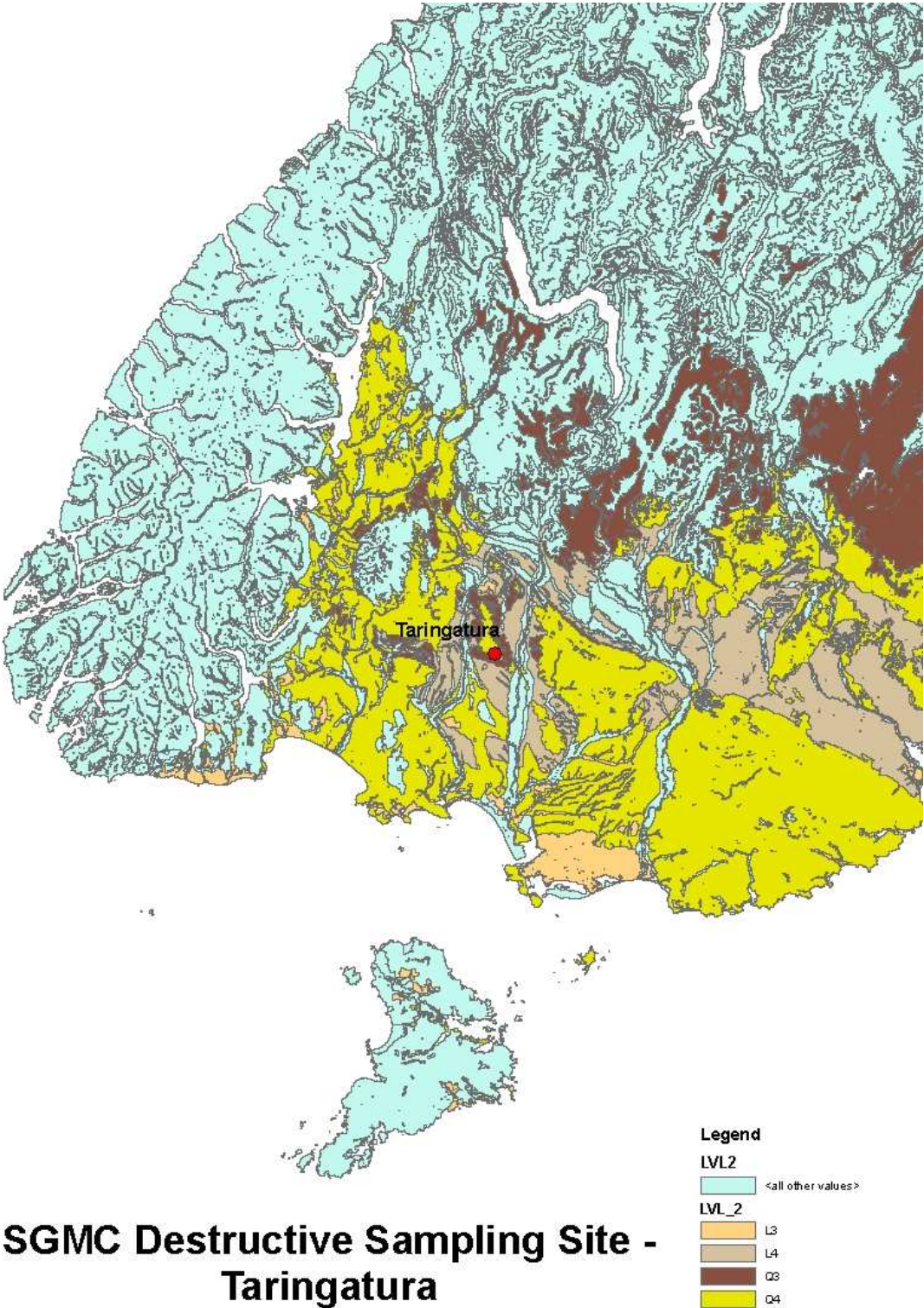


Figure 15. Location of “destructive sampling” sites in Southland with respect to Level 2 Environments.



Appendix 3. Location of PhotoMARVL/ TreeD studies

Figure 16. Location of PhotoMARVL / TreeD studies in SGMC trials with respect to Level 1 Environments.

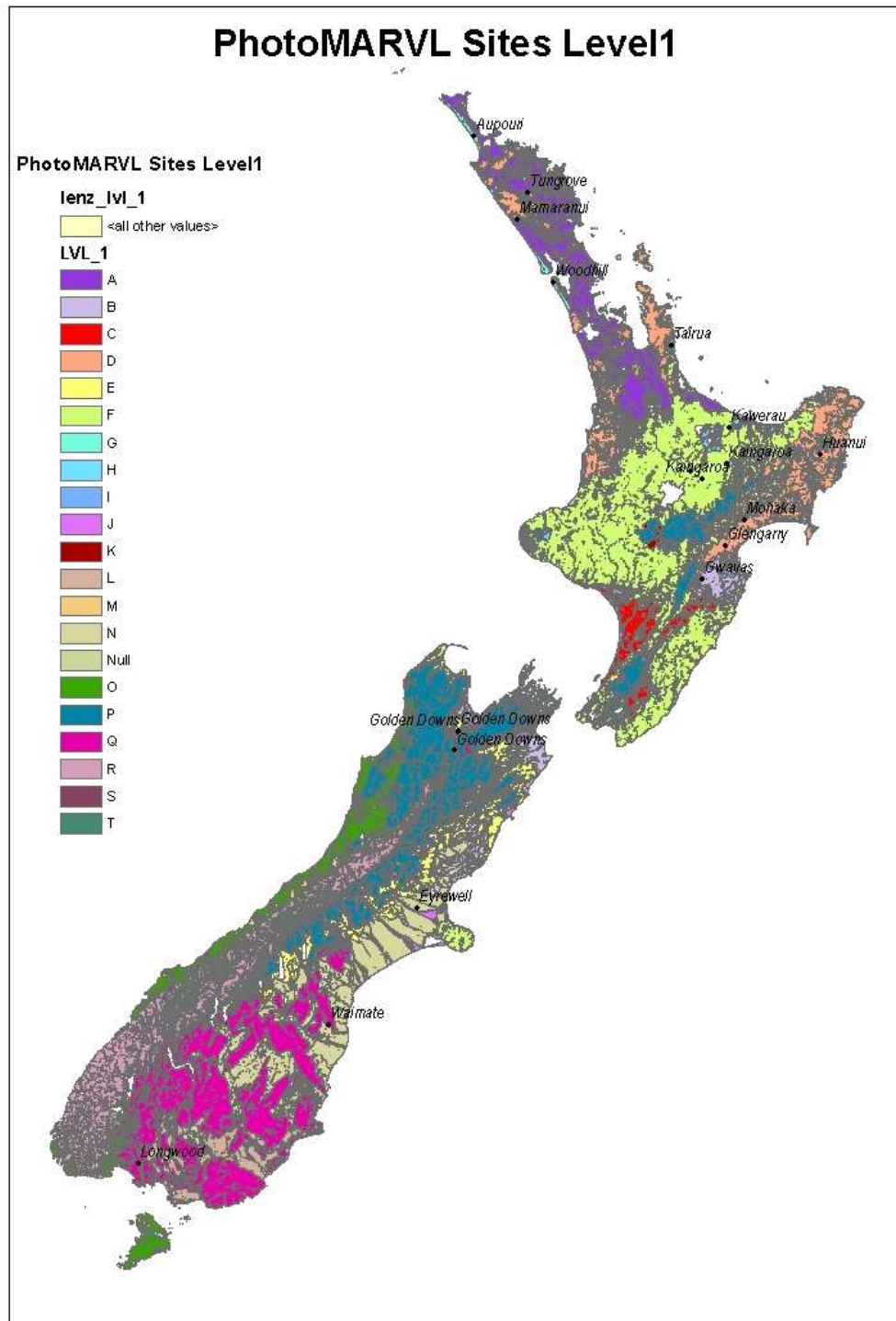


Figure 17. Location of PhotoMARV1/ TreeD studies in Northern North Island with respect to Level 2 Environments.

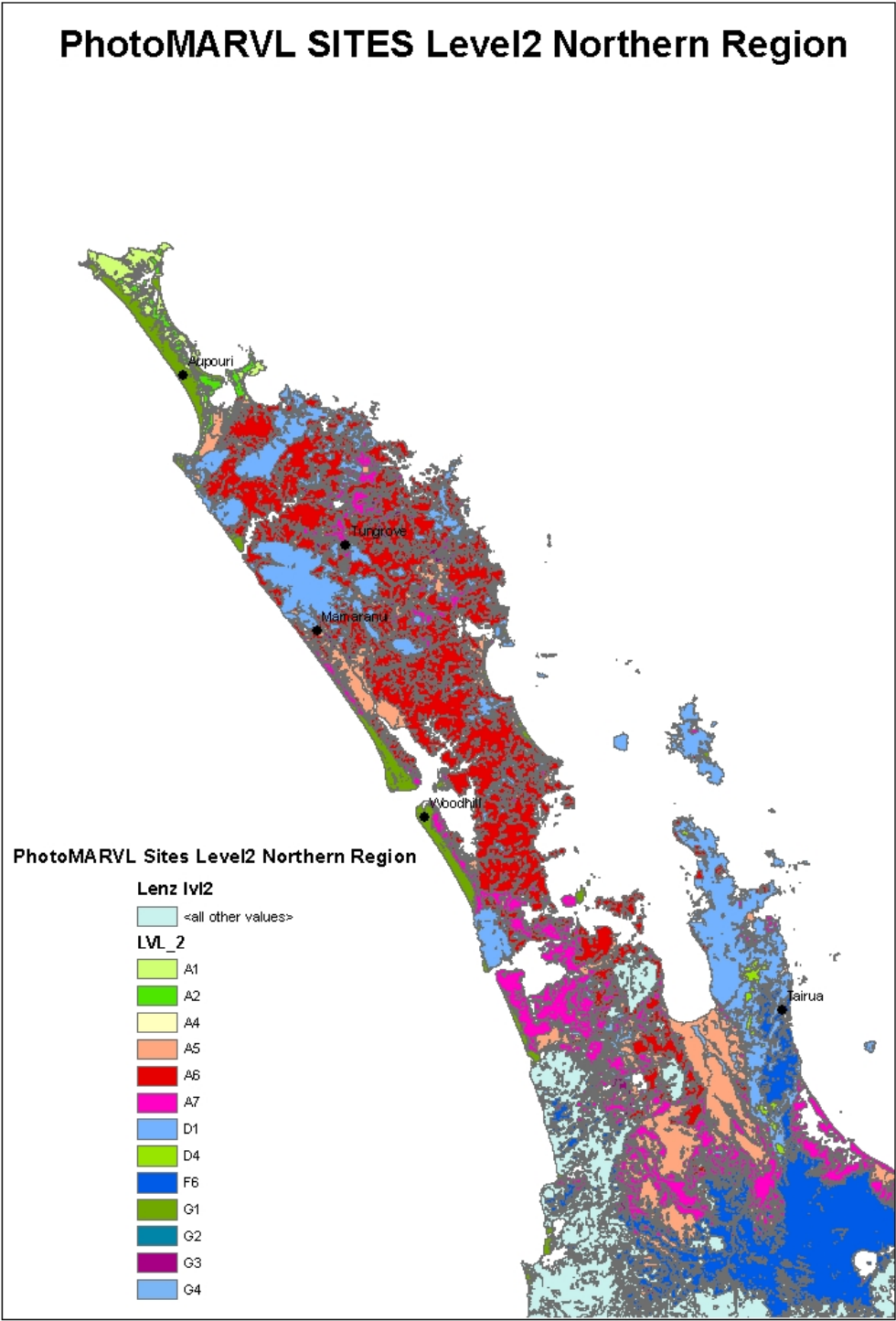


Figure 18. Location of PhotoMARVL / TreeD studies with Central North Island and Hawkes Bay with respect to Level 2 Environments.

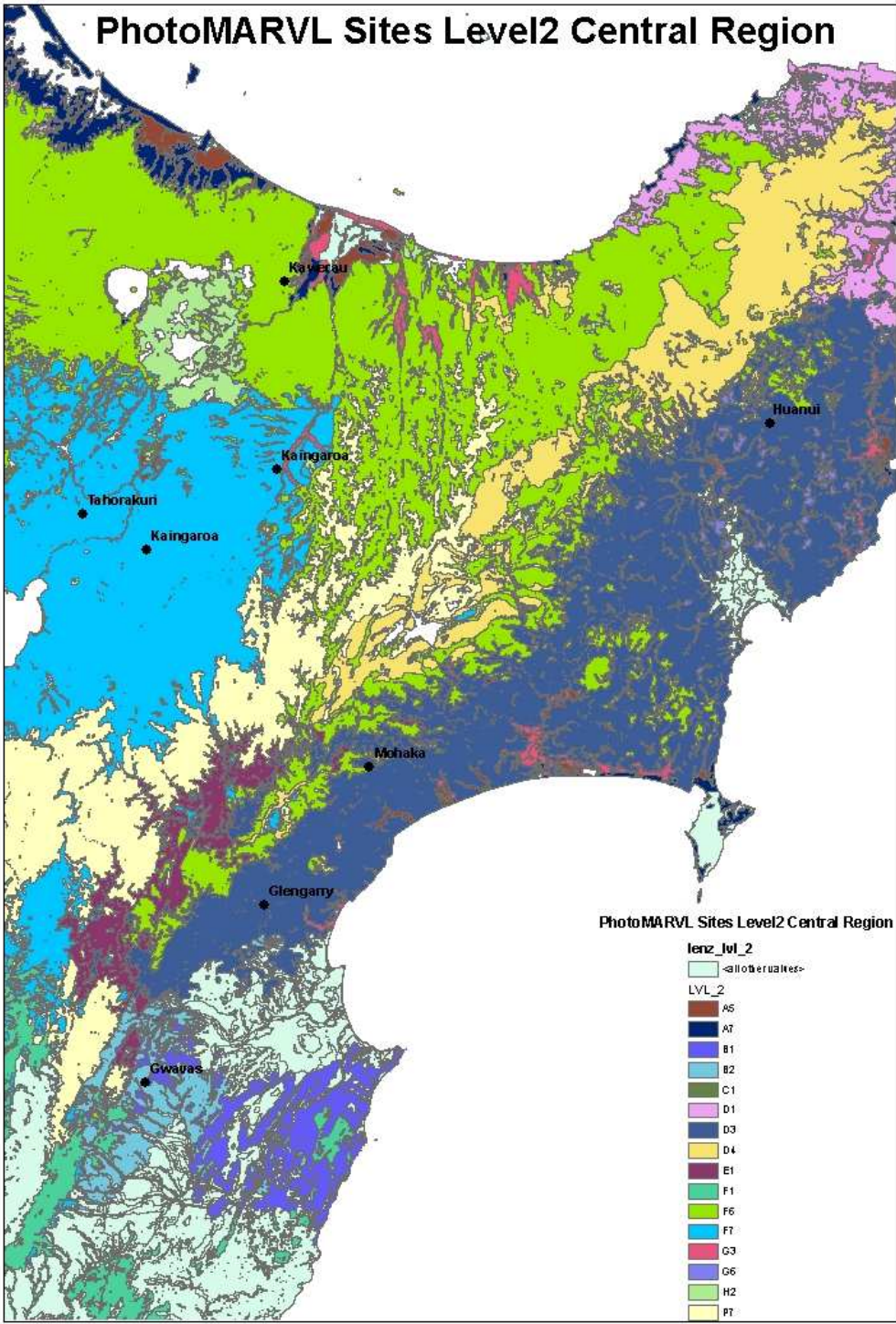


Figure 19. Location of PhotoMARVL / TreeD studies in SGMC trials in Northern South Island with respect to Level 2 Environments.

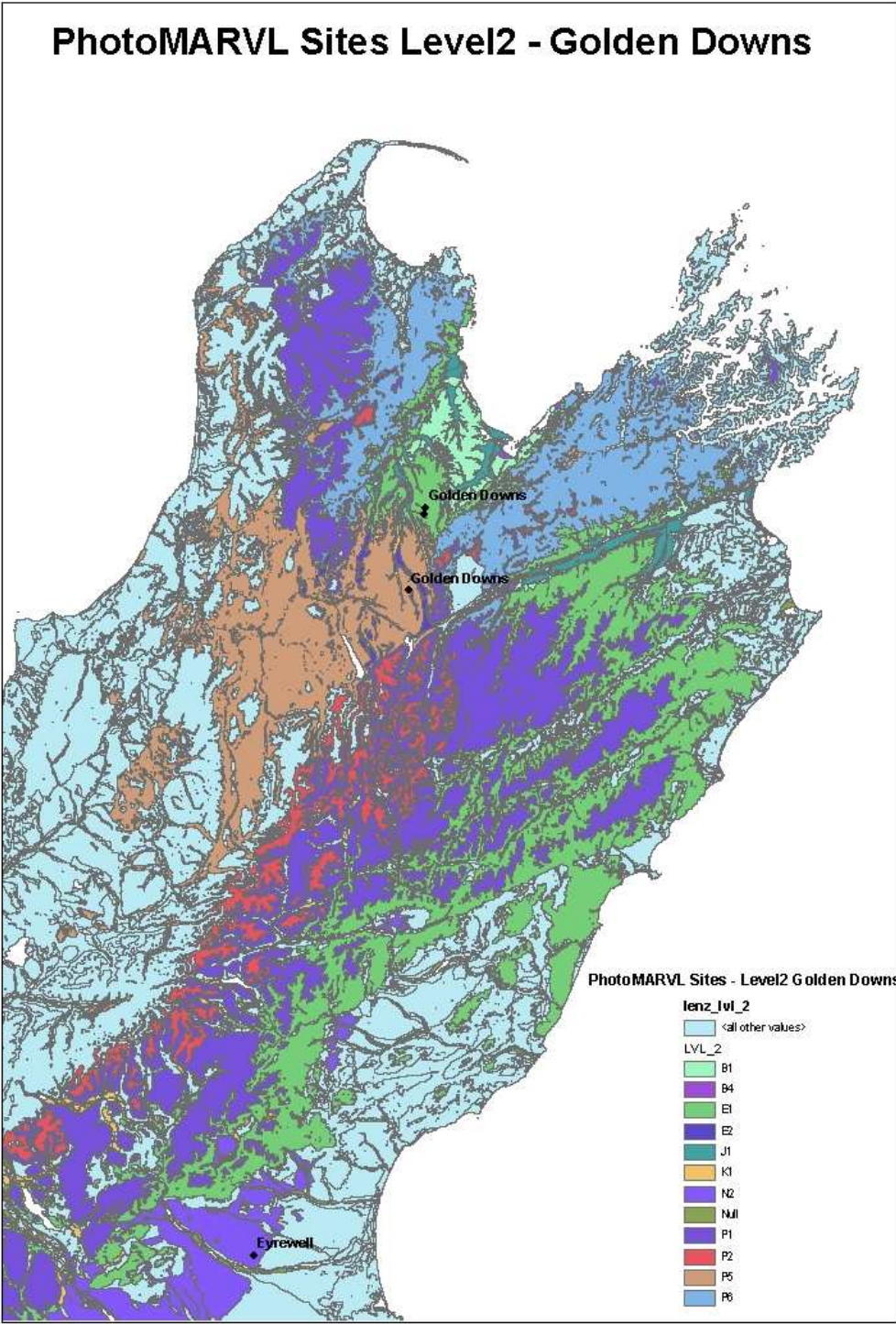
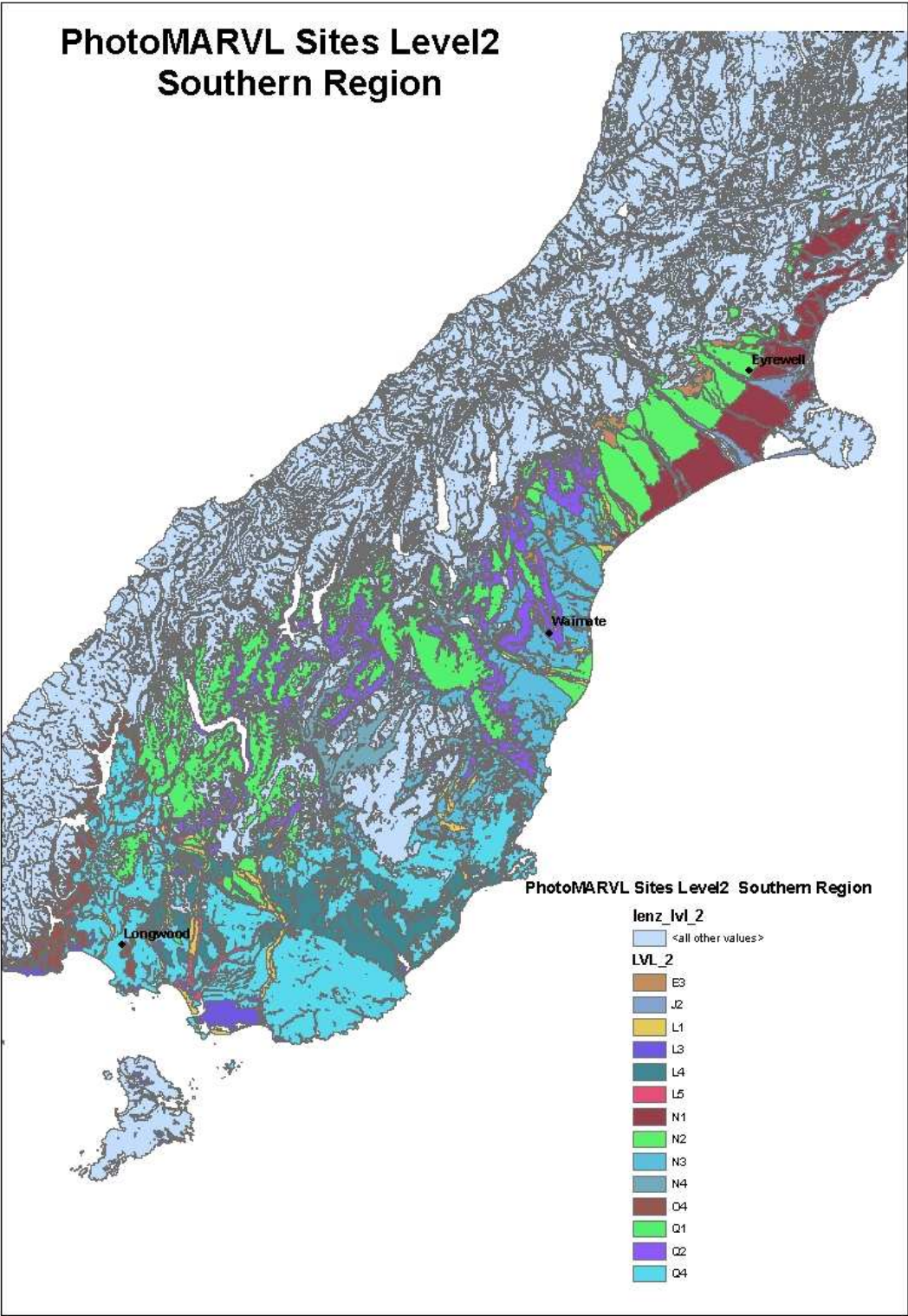


Figure 20. Location of PhotoMARVL / TreeD studies in SGMC Trials in Southern South Island with respect to Level 2 Environments.



Appendix 4. Regional PhotoMARVL / TreeD studies

Figure 21. Location of PSP in Hawkes Bay Region where PhotoMARVL / TreeD data have been collected.

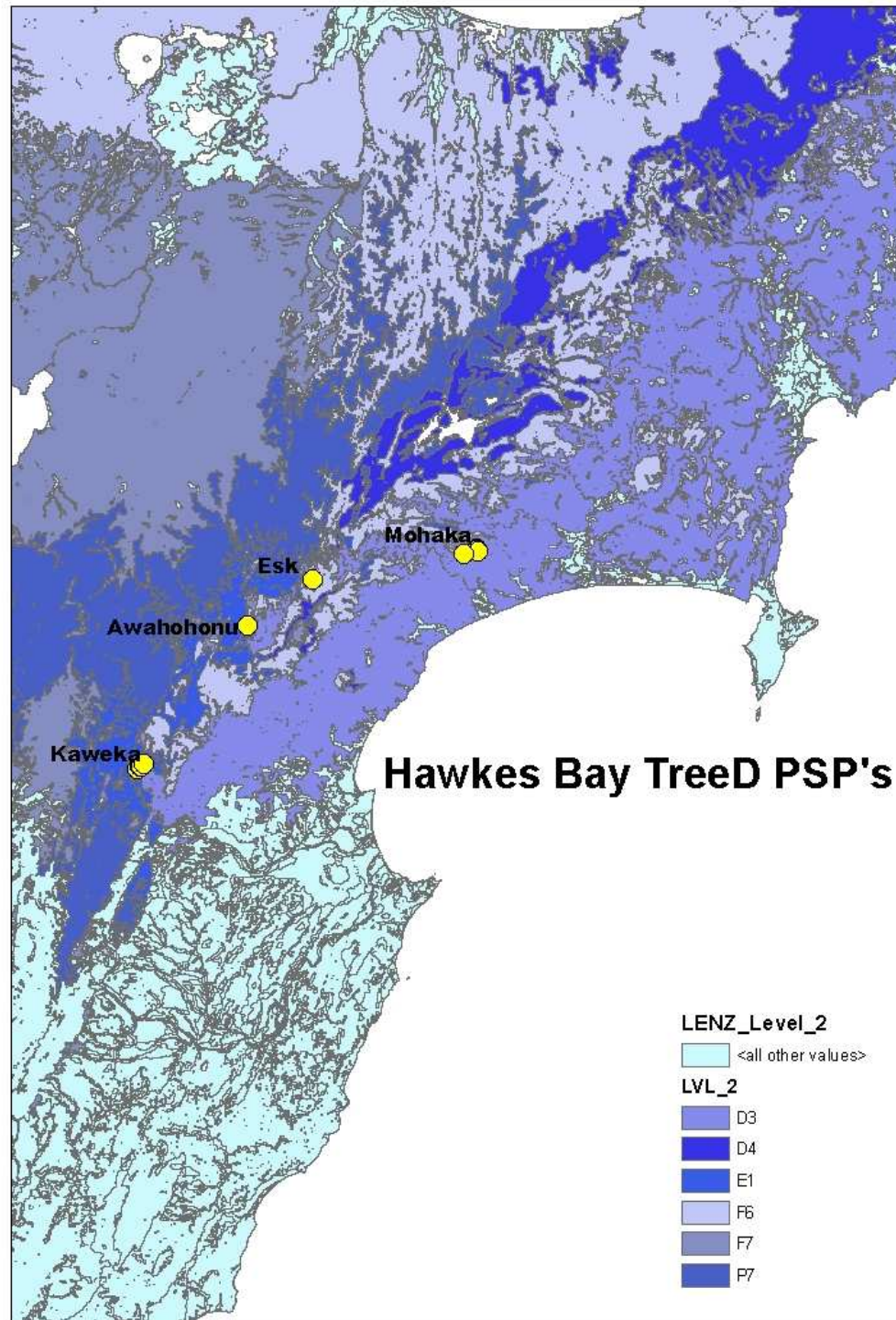


Figure 22. Location of PSPs in Westland region where PhotoMARVL / TreeD data have been collected

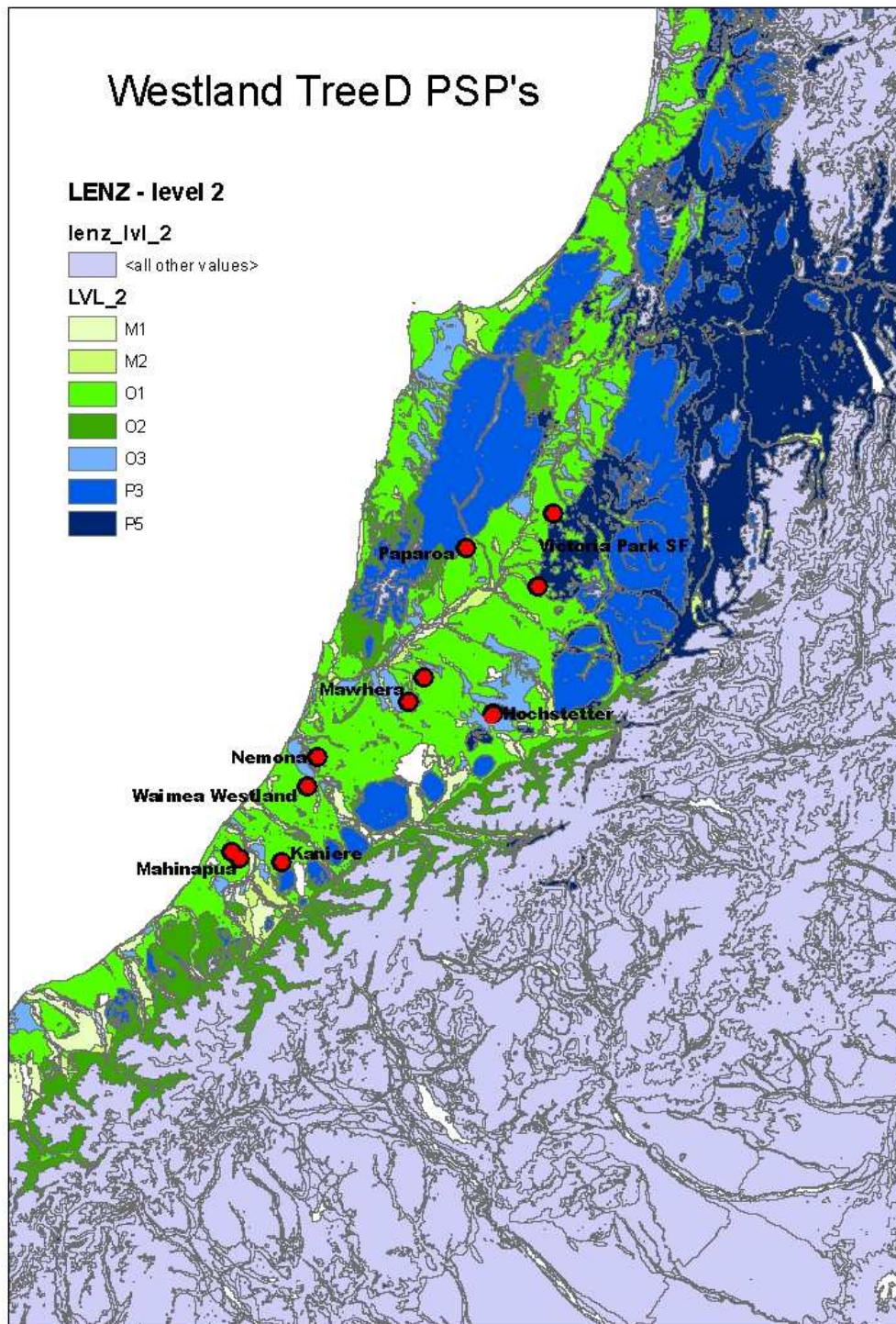


Figure 23. Location of PhotoMARVL / TreeD data where PhotoMARVL / TreeD data have been collected

