

Images of data collection procedures

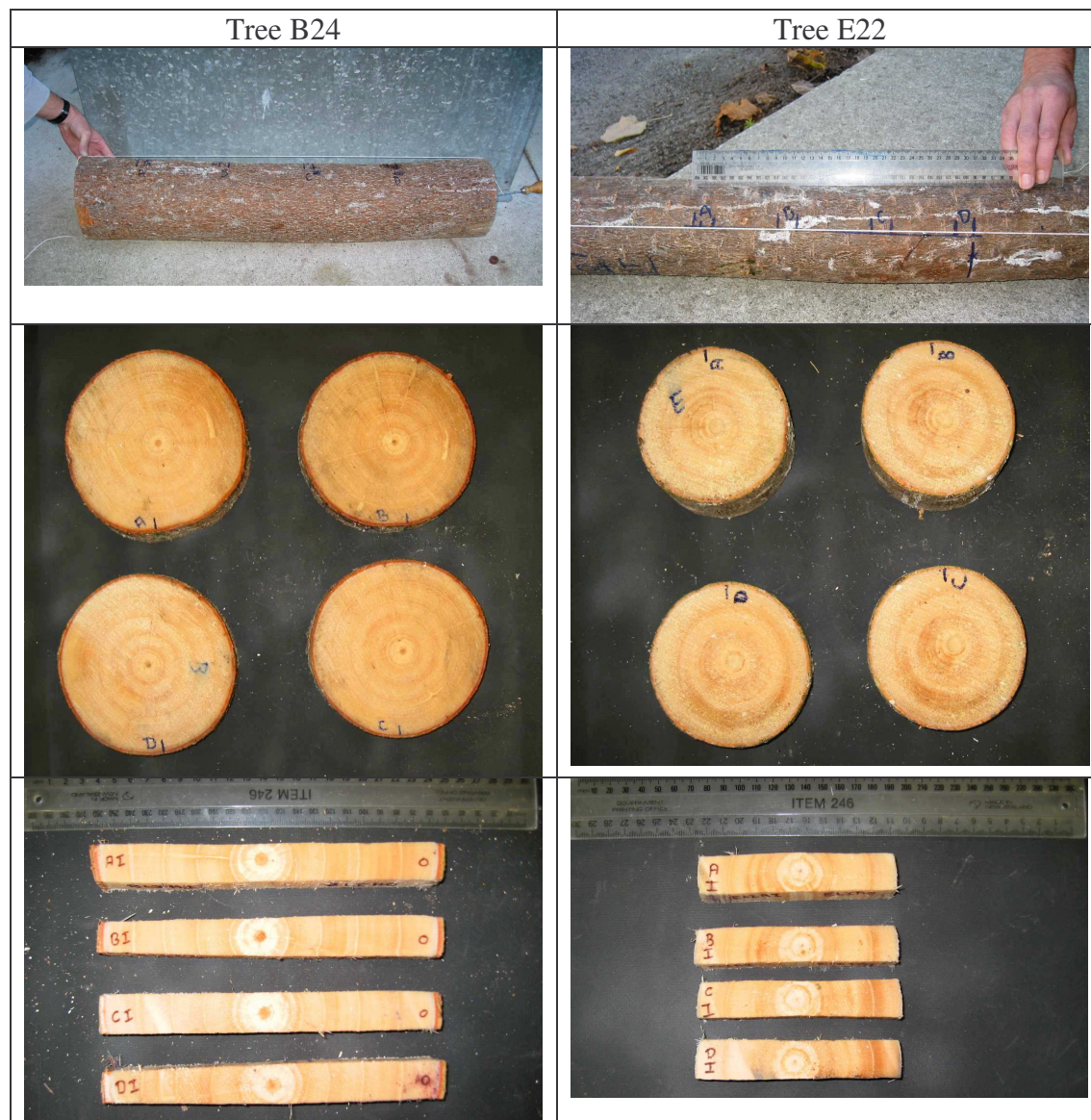
Figure 1. Weighing a foliage branch after the foliage had been removed



Figure 2. Image showing how sample branch and internode were marked in the field



Figure 3. Long internodes saved, showing position of discs cut. Images of discs and strips cut from these internodes.



Notes:

B24:

- Discs approximately 20 cm apart
- Maximum deviation from string, approximately 20 mm

E22:

- Discs approximately 7 cm apart.
- Maximum deviation from string, approximately 17 mm

Figure 4. Image showing how grain angle is marked

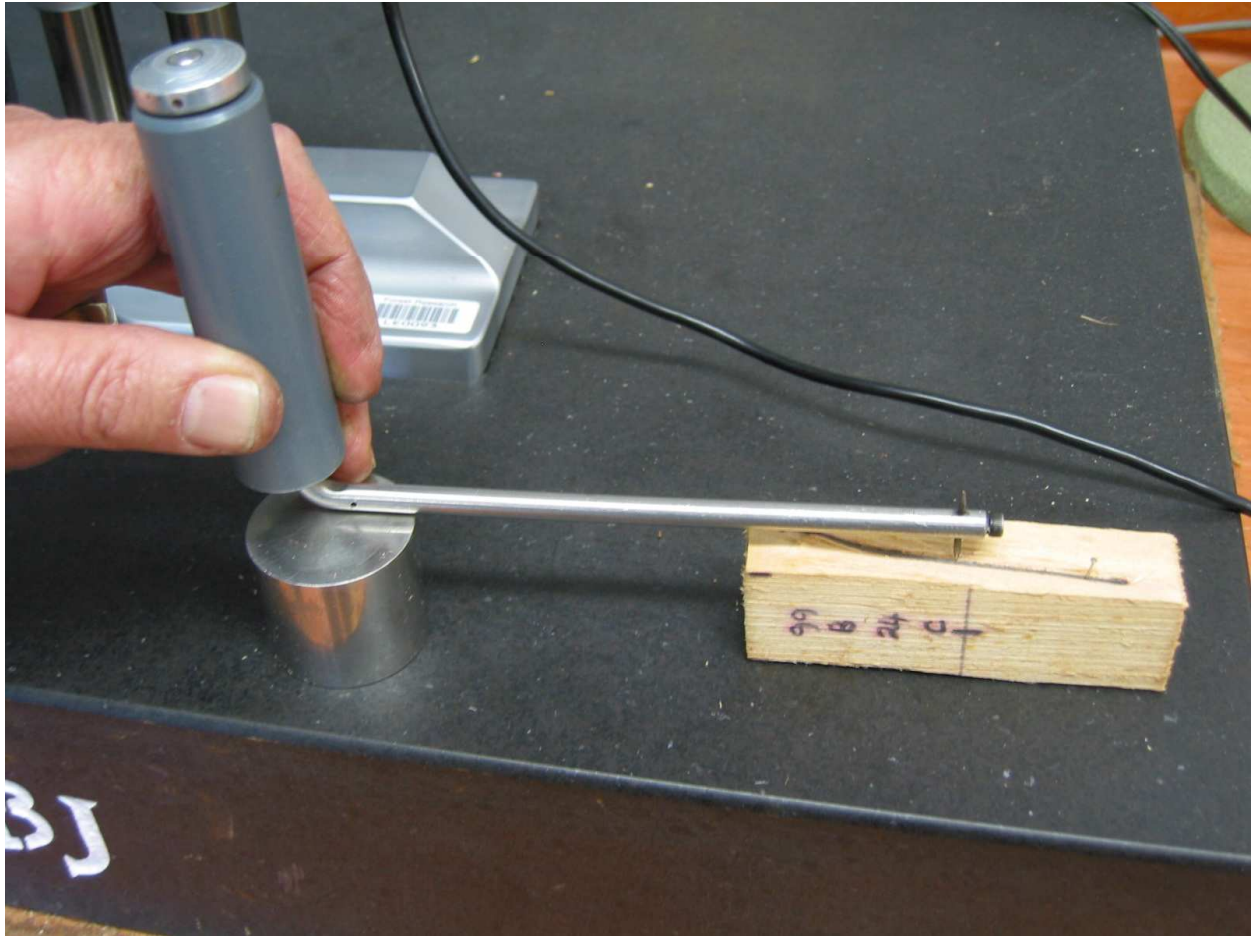


Figure 5. Image showing how spiral grain is measured (This sample has a spiral grain angle of -12°).

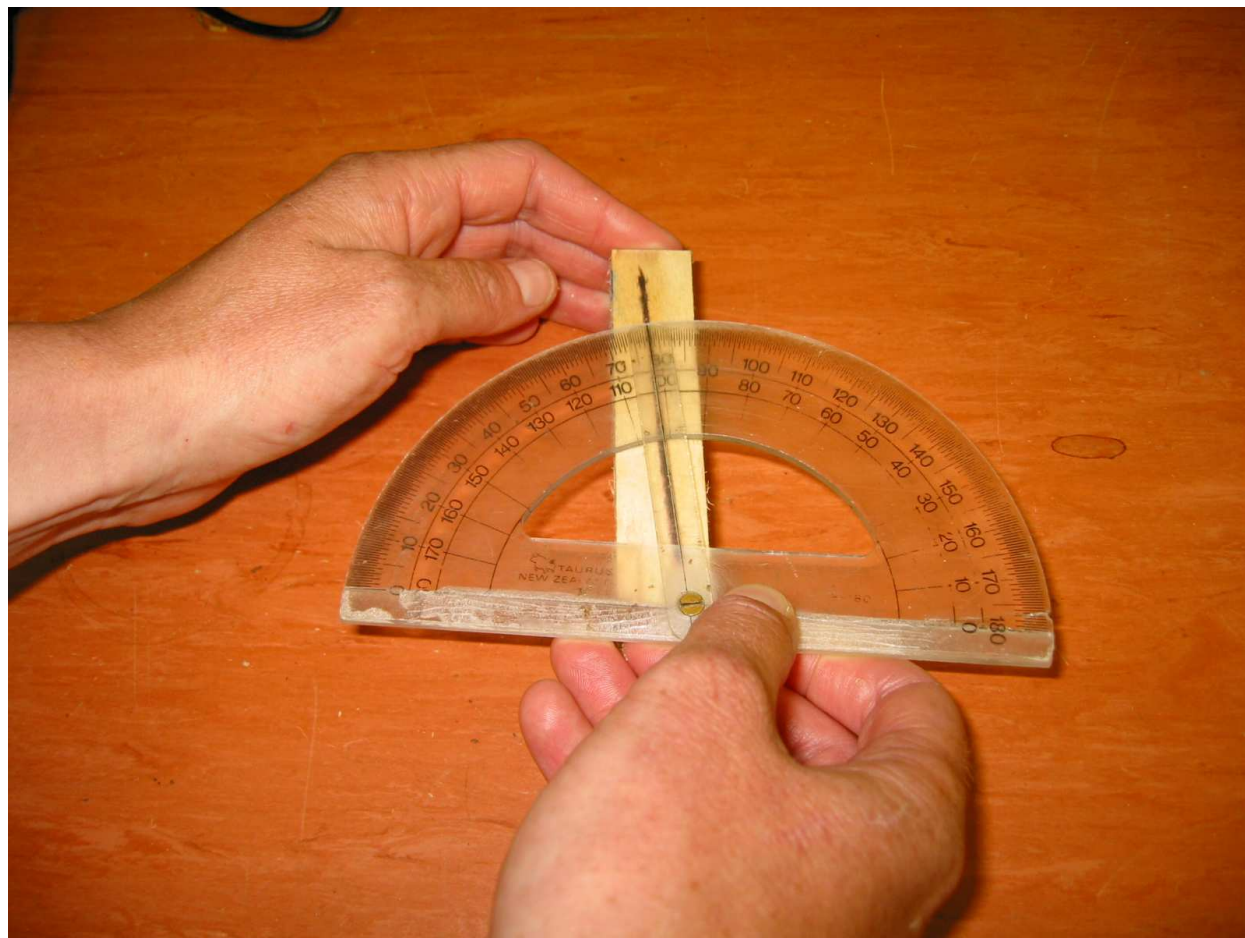


Figure 6. Image showing how distance between pins was measured.



Figure 7. Image showing how width of sample was measured.



Figure 8. Image showing a sample being weighed.

