



## Forest Growers Research Conference October 2017

**Russell Dale**  
Research and Development Manager

**Forest Growers Research Ltd**  
**Forest Owners Association**

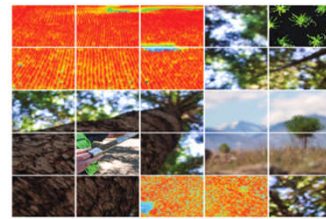


## Housekeeping Matters



## Strategic Drivers of Research

### New Zealand Forest Growers' 2017 Science and Innovation Plan



Research and development to  
increase the profitability and sustainability of  
the New Zealand forest-growing sector

May 2017

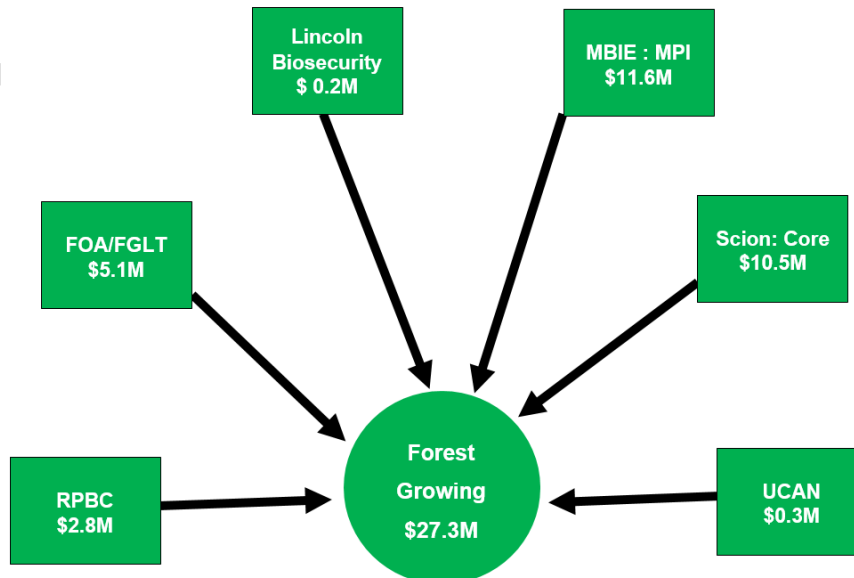


## Key Research Objectives

- Protect forest assets and markets from adverse factors
- Improve productivity and uniformity of resource
- Sustain and enhance forestry's community licence to operate
- Improve efficiency and safety in operations and supply chain
- Ensure species options for diversity of sites and markets

**To improve profitability and sustainability of  
Forest Growers**

## Significant Leverage for Industry Funding



## Programme Highlights



## **Programme Highlights**

- **Steepland Harvesting**  
*A catalyst for significant industry change*
- **Remote Sensing Technologies**  
*Widespread industry adoption*
- **Forest Productivity**  
*Has identified large cost of sub optimal management*

## **Programme Highlights**

- **Needle Diseases**  
*Huge gain in knowing the enemy*
- **Seedling Health**  
*Benefits in reducing chemical use and increasing use of biological agents*
- **Specialty Species**  
*Enhanced programme to raise confidence in alternatives*
- **Licence to Operate**  
*Community licence is critical – ignore at our peril*

## **Industry Engagement Essential**

- **Significant in kind industry investment**
- **25 research programmes supported in 2017 - \$5.1m**
- **28 senior industry and research people on Forest Research Committee, Forest Growers Research and Programme Steering Groups**
- **30 industry people on Technical Steering Teams working with researchers to shape and deliver the research and outputs to industry**



**Website:            [www.fgr.nz](http://www.fgr.nz)**

**Forest Growers Research Ltd  
PO Box 1127  
Rotorua 3040**

